

# From Integration to Orchestration

## WSO2 + Solace and the Event-Driven Future of Agentic AI

---

Michael Hilmen · Director of Technology, Strategic Alliances · Solace

WSO2Con North America 2026 · Austin, TX

# Two Forces Reshaping the Enterprise

## WAVE 1

### Real-Time, Event-Driven Architecture

Connect everything — apps, APIs, IoT, microservices — in real time across any cloud or on-prem environment.

Enterprises moving from batch/polling to always-on event streaming. Milliseconds matter: in trading, logistics, and manufacturing, a stale data feed costs real money.

## WAVE 2

### Agentic AI Across Enterprise Systems

AI agents that reason, act, and collaborate autonomously — not just copilots, but workers.

Enterprises deploying agents that need to be governed, secured, and auditable. These agents must operate at machine speed across APIs, events, and data systems.

*"Events and APIs must be delivered as products with self-service in mind."*

*— David Mooter, Principal Analyst, Forrester Research*

# The WSO2 + Solace Journey

Four steps to an event-driven, AI-ready integration platform

01

## Add an Event Broker

Unlock event-driven patterns. Rock-solid, scalable foundation inside WSO2.

02

## Span Any Environment

Multi-protocol event mesh. Hybrid & multi-cloud by configuration, not re-architecture.

03

## Elevate Events into APIs

Event-native APIM + API Federation. Democratise access to events across your enterprise.

04

## Govern AI Agents

SAM + WSO2 Agent Manager. Auditable, observable, production-grade agentic AI at scale.

solace.

# The WSO2 + Solace Journey

Four Steps to an Event-Driven, AI-Ready Integration Platform

01

ROBUST INTEGRATION FLOWS

Add an Event Broker. Unlock Event-Driven Patterns.



Replace brittle point-to-point connections with resilient, decoupled event flows using queues and topics.

EVOLVE →

02

HYBRID CLOUD & MULTI-PROTOCOL

Span Any Environment. Speak Any Protocol.



Connect brokers as an event mesh spanning on-prem and cloud. Integrate IoT, legacy, and modern systems via any protocol.

EVOLVE →

03

API PROGRAMME INTEGRATION

Elevate Events into Your API Economy.



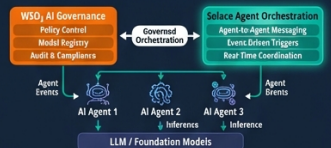
Publish event-driven APIs through WSO2 API Manager. Give developers self-service access to real-time event streams.

EVOLVE →

04

AGENTIC AI FOUNDATION

Govern AI. Orchestrate Agents. Act in Real Time.



Combine WSO2 AI Governance with Solace Agent Orchestration to build a secure, real-time foundation for autonomous AI workflows.

# Today's Integration Is Holding You Back

## Synchronous & Fragile

REST-first architectures create tight coupling. One slow downstream service and your entire flow backs up — timeouts cascade into outages at the worst possible moment.

## Stale Data, Missed Opportunities

Polling and file-based batch transfers mean minutes or hours of latency. In trading, logistics, and fraud detection, stale data isn't just slow — it's costly.

## Silo-ed & Ungoverned

Point-to-point spaghetti with no single view of data flows or compliance. Shadow integrations multiply. Nobody knows all the consumers of a given topic.

## No Unified API + Event Governance

API tools don't know about event streams. Event brokers don't speak API governance. The gap — two separate platforms, two governance models — is the core problem WSO2 and Solace solve.

# Elevating WSO2 with Event-Driven Architecture

*A three-step evolution to a future-proof integration platform*

1

## Future-Proof the Backbone

Vertically scalable to millions of connections — no lost orders or missed events during traffic spikes. Proven at the world's largest banks, telcos, and exchanges.

2

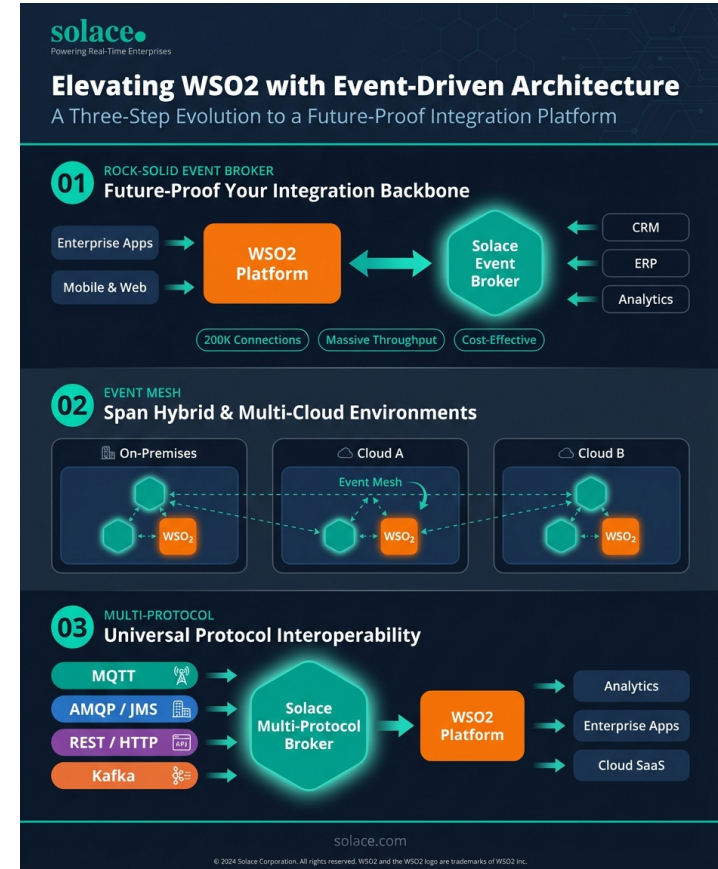
## Span Hybrid & Multi-Cloud

Connect brokers as an event mesh. Evolve from single-broker to a distributed, hybrid-cloud topology by configuration — zero re-architecture.

3

## Universal Protocol Interoperability

MQTT for IoT, Kafka for streaming, AMQP, REST, JMS — one broker speaks all. Unlock SAP data as events via SAP Advanced Event Mesh.



# To become more real-time, you need to become event-driven.

## Publish / Subscribe

Producers and consumers are fully decoupled. Add a new AI model, analytics system, or downstream app without touching the source or existing assets — ever.

## Real-Time Delivery

Events flow in milliseconds across hybrid and multi-cloud environments. React instantly — fraud detected before the transaction clears.

## Guaranteed Messaging

High-throughput, multi-protocol backbone: MQTT, AMQP, Kafka, REST, JMS, WebSocket. No messages dropped under load.

# WSO2 + Solace: Better Together

## Solace

- ▶ High-throughput, enterprise-grade event broker
- ▶ Multi-protocol: MQTT, AMQP, Kafka, REST, JMS
- ▶ Event Portal: design, govern & catalog event APIs
- ▶ Event mesh for hybrid & multi-cloud distribution
- ▶ Solace Agent Mesh (SAM) for agentic AI comms
- ▶ SAP Advanced Event Mesh, powered by Solace



## WSO2

- ▶ Open-source API management & integration platform
- ▶ API security, identity & lifecycle governance
- ▶ AsyncAPI: AMQP, MQTT, WebSocket native support
- ▶ Expose legacy services as modern APIs
- ▶ WSO2 Agent Manager: governance for AI agents
- ▶ Vendor-neutral open standards — zero lock-in

**Together: Unify APIs, events, and legacy services for real-time, open integration — with full vendor neutrality.**

# Elevate Events Into Your API Economy



## Event-Native APIM

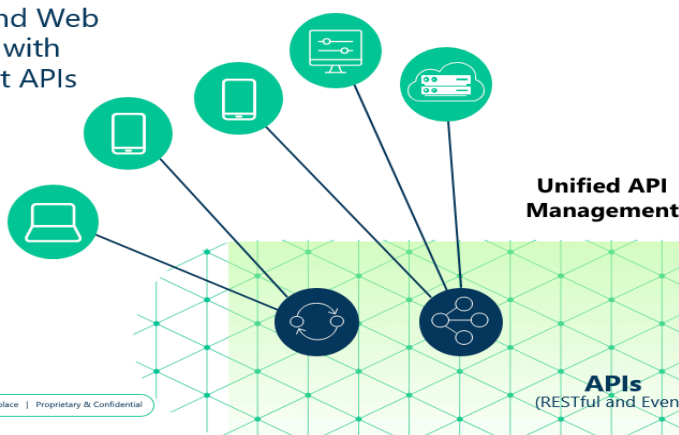
Extend Web APIs with Event APIs — expose event streams via familiar REST endpoints, with full WSO2 gateway policy enforcement (auth, rate limiting, audit) on every async interaction.

## API Federation

Point WSO2 API Publisher at Solace to discover Event API Products in your Solace Catalog — developers self-service subscribe to enterprise event streams alongside REST APIs in one portal.

## Event-Native APIM

Extend Web APIs with Event APIs



## API Federation

API Enable Enterprise Events



# The Joint Reference Architecture

CONSUMERS &  
PRODUCERS

Enterprise Apps

Microservices

IoT / OT  
Devices

AI Agents

3rd-Party APIs

## WSO2 | API Manager & Agent Manager — Security, Identity & Governance

API Gateway · OAuth2 / JWT · AsyncAPI Registry · Developer Portal · AI Token Analytics · Full Audit Trail · Agent Rate Limiting

## Solace | Event Mesh — High-Throughput, Multi-Protocol Real-Time Backbone

MQTT · AMQP · Kafka · REST · JMS · WebSocket · On-Prem · AWS / Azure / GCP · Edge · SAP AEM  
· OTEL Distributed Tracing

*One governance layer. Any protocol. Any cloud. Any agent.*

# Unified Governance: APIs + Events

*Four capabilities neither platform delivers in isolation:*

01

## **Discover & Catalog Everything**

RESTful APIs and async event topics in a single developer portal. Self-service discovery for internal teams, partners, and suppliers. No more shadow integrations.

02

## **Enforce Policy Consistently**

Rate limits, auth, and compliance rules applied uniformly — whether it's an HTTP call or an async event stream subscription. One policy engine, all interactions.

03

## **Audit Every Interaction — Including Across Systems**

Solace supports OTEL distributed tracing — passing Trace/Span context to and from WSO2 for end-to-end visibility across event-driven integration flows. Who consumed what, when, and how it traversed the mesh.

04

## **Control Who Publishes and Subscribes – at the Topic Level**

Access control at the topic level. Publisher and subscriber permissions are defined separately. Enforcement is at the broker. Combined with WSO2's API-layer policy enforcement, you get access governance that spans both the request-response and event-driven tiers without gaps.

# AI Agents Are Here. Is Your Infrastructure Ready?

ms

## Speed

Agents act in milliseconds. Polling-based APIs can't keep up — you need event-driven push.

ID

## Identity

Every agent call needs identity, auth, and full audit trail. Regulators will demand proof.

10K

## Scale

Thousands of agents in parallel across multi-cloud. Guaranteed delivery, not fire-and-forget HTTP.

Reg

## Governance

Who authorised this agent to act? What data did it access? Explainability is non-negotiable.

# The Agentic AI Stack: SAM + WSO2

**WSO2 Agent Manager governs agents (auth, rate limits, audit). Agent-to-agent communication protocol & security: implementer's choice. Solace Agent Mesh answers that question.**

## WSO2 API & Agent Manager

Governs agents: identity, access control, rate limiting, AI token analytics, full audit trail. Does NOT

## Solace Platform

High-throughput event mesh backbone: guaranteed delivery, multi-protocol, multi-cloud. The transport

## Solace Agent Mesh (SAM)

Answers A2A: open-standard A2A + MCP protocols, guaranteed delivery, security enforcement, and SAM



# Enterprise-Grade Agentic AI

*Powerful. Auditable. Governed. Production-ready.*

## AI Agents

- LLM Orchestrator
- Task Agents
- Tool-Calling Agents
- Human-in-the-Loop
- Multi-Agent Pipelines



## Solace Agent Mesh

- Event-driven agent comms
- Guaranteed delivery
- A2A + MCP protocols
- Full audit: prompts → reasoning → calls → results
- Multi-cloud routing



## WSO2 Governance

- OAuth2 / identity for agents
- Rate limiting & cost control
- AI & API token analytics
- Full audit trail per agent
- AsyncAPI lifecycle mgmt

**SAM full audit: every prompt, every reasoning step, every subsequent agent call, every result**  
— traceable and exportable. **WSO2 AI analytics: token cost in real time.**

# Real-World Use Cases

## Financial Services

- ▶ Real-time FX trading at sub-millisecond latency
- ▶ AI agents monitoring positions & risk in real time
- ▶ WSO2 enforcing MiFID II audit trail on every event
- ▶ Unified governance across payments, market data & events
- ▶ Fraud detection: event-driven signal, not batch alert

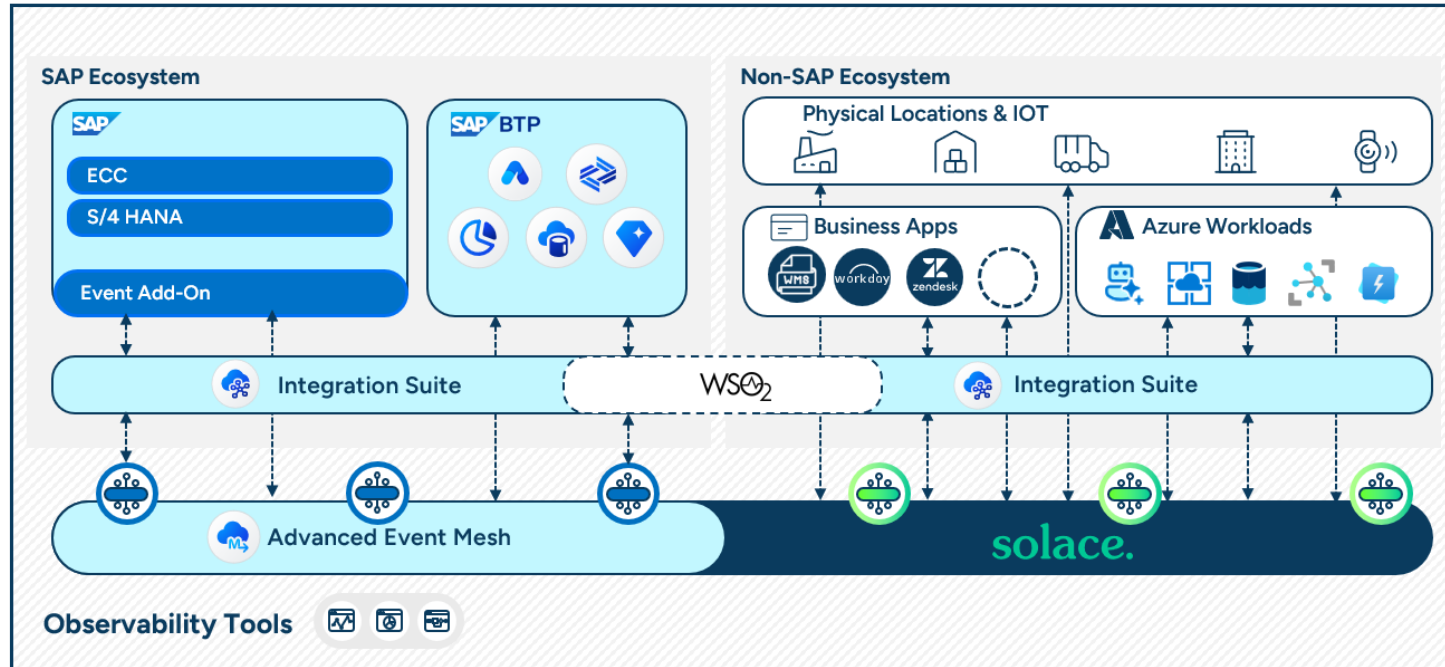
## IoT & Manufacturing

- ▶ 10M+ MQTT device messages/sec via event mesh
- ▶ AI agents diagnosing equipment anomalies in real time
- ▶ WSO2 managing device identities & API keys at scale
- ▶ Unlock OT + SAP data as events — no re-architecture
- ▶ Predictive maintenance: act before assets fail

## Public Sector & Regulated

- ▶ National Weather Agency: real-time MQTT climate feeds
- ▶ WSO2 exposes datasets as REST + event APIs to partners
- ▶ Meets World Meteorological Organisation compliance
- ▶ Researchers & citizens access governed real-time data
- ▶ Open standards: no lock-in, works with any consumer

# Conceptual Architecture: Event Driven Integration with end-to-end observability



## Medical Supplier

SAP AEM

WSO2

Solace Event Mesh

Full Observability - OTEL

# Why Now?

40%

of enterprises  
deploying AI agents  
by 2026

*Gartner*

10×

more AI Agent  
usage  
by 2027 vs. 2022

*IDC*

\$4.4T

in productivity gains  
from  
generative AI by  
2030

*McKinsey,\**

EDA

one of fastest  
growing integration  
patterns

*Forrester*

**The window to establish the event-driven + agentic foundation is NOW.  
Companies building this architecture today will scale agentic AI successfully.  
Those bolting AI onto fragile synchronous infrastructure will re-architect under pressure.  
WSO2 + Solace give enterprises the architecture they need — before they need it twice.**

\* <https://www.mckinsey.com/mgi/media-center/ai-could-increase-corporate-profits-by-4-trillion-a-year-according-to-new-research>

# Key Takeaways

1

## **A Four-Step Customer Journey — from Event Broker to Agentic AI**

Start by adding a rock-solid event broker to WSO2 — immediate ROI, immediate future-proofing. Evolve to hybrid-cloud event mesh, event-native APIM, and governed agentic AI. Each step adds value. All four steps are a single integrated platform.

2

## **SAM + WSO2 Agent Manager = Production-Grade Agentic AI**

Solace Agent Mesh provides event-driven orchestration with full A2A and MCP protocol support — and SAM traces every prompt through the agent graph. WSO2 wraps every interaction with identity, rate limiting, AI cost analytics, and a complete audit trail.

3

## **Vendor-Neutral, Open Standards, Enterprise-Ready Today**

AsyncAPI, CloudEvents, A2A, MCP — no lock-in. Works with Kafka, SAP AEM, IBM MQ, and your existing API investments.

*Full reference architecture & joint use cases: [solace.com/partners](https://solace.com/partners)*

# Let's Build the Agentic Future Together

## Explore Solace/WSO2 Integration

[https://  
apim.docs.wso2.com/en/  
4.1.0/tutorials/  
integrating-with-solace/  
#integrating-the-solace-  
event-broker](https://apim.docs.wso2.com/en/4.1.0/tutorials/integrating-with-solace/#integrating-the-solace-event-broker)

## Try Solace Agent Mesh

Open-source and available today. Spin up a governed multi-agent architecture in minutes. Start at [github.com/SolaceLabs/solace-agent-mesh](https://github.com/SolaceLabs/solace-agent-mesh).

## Read the Blog

Unified API and Event Management:

[https://solace.com/blog/  
patterns-event-apis-  
unified-apim/](https://solace.com/blog/patterns-event-apis-unified-apim/)